



Elegance 86 New Line

- ☆ Turn-Key Condition
- ☆ 4+1 cabins
- ☆ Stabilizers
- ☆ Hardtop on Flybridge
- ☆ low engine hours
- ☆ regular maintenance



Drettmann Yachts GmbH
Arberger Hafendamm 22
28309 Bremen
+49 421 566070
brokerage@drettmann.com



Elegance 86 New Line



Length

26.20 m

Year

2006

Engines

2x MTU 12V 2000
M93

Speed (Cruising / max.)

21 kn / 26 kn

Guests / Cabins

8 / 4

Bathrooms

4

Beam

6.10 m

Material hull

GRP

Power

2x 1323 kW
2x 1800 PS

GRT

71

Fuel Tank approx.

8,500 l

Crew / Cabins

3 / 2

Draft

1.85 m

Material superstructure

GRP

Drive

Shaft

Class

-

Flag

Deutsch

Location

Spain

1,750,000 €

incl VAT



Elegance 86 New Line

"ESPRESSO" is a masterpiece of maritime luxury crafted in 2006 and meticulously maintained to perfection. This elegant yacht, exclusively used privately, is a testament to refined taste and opulent living on the water.

Accommodating up to 8 guests in 4 exquisitely designed cabins, "ESPRESSO" is an embodiment of comfort and sophistication. The interior seamlessly blends classic wood with light-colored fabrics, creating a timeless and inviting atmosphere. Alcanatra panels add a touch of modernity, enhancing the overall aesthetic appeal.

Underneath its sleek exterior lies the power of 2 x MTU M93 engines, each boasting an impressive 1800 horsepower. Paired with ABT stabilizers, "ESPRESSO" ensures a smooth and comfortable cruising experience, effortlessly gliding through the water with unmatched grace. Whether exploring tranquil bays or venturing into open seas, this yacht promises an unparalleled journey.

The generously designed fly-bridge is a haven of relaxation, featuring a third driving position that allows for an immersive connection with the open sea. A well-appointed bar beckons for moments of indulgence, while a comfortable lounging area invites guests to bask in the sun or unwind under the stars. A crane aft adds a practical touch, facilitating the effortless launch and retrieval of the tender.

"ESPRESSO" doesn't just provide a luxurious setting; it offers a complete experience. The attention to detail is evident in every corner, from the carefully chosen materials to the thoughtful layout that maximizes both privacy and communal spaces. With an emphasis on comfort and style, this yacht is an invitation to savor life's finest moments on the water.

Whether entertaining guests in the sophisticated saloon, enjoying a meal in the elegant dining area, or basking in the sun on the spacious deck, "ESPRESSO" epitomizes the pinnacle of yachting indulgence. With space for up to 3 dedicated crew members, every aspect of the yacht's operation is seamlessly taken care of, allowing guests to immerse themselves fully in the luxury and serenity that "ESPRESSO" provides.



Drive

Steering	Servo/hydraul.
Trim tabs	Hynautic
Bow screw	1x hydraulic
Stabilizers	ABT TRAC
Engine compartment fan	2 x
Speed	max. 26.0 kn / cruising 21.0 kn

Engines

// Engine 1

Manufacture	MTU / 12V 2000 M93
Type	Inboard engine / Diesel (Turbo) / 12 cylinder (V-Form)
Power	1323 kW (1800 PS)
Engine hours	1870 h (State 04.05.2023)
Drive	Shaft
Cooling	Dual circuit cooling
Operation	electric (3x)

// Engine 2

Manufacture	MTU / 12V 2000 M93
Type	Inboard engine / Diesel (Turbo) / 12 cylinder (V-Form)
Power	1323 kW (1800 PS)
Engine hours	1870 h (State 04.05.2023)
Drive	Shaft

Cooling	Dual circuit cooling
Operation	electric (3x)

// Generator 1

Manufacture	Kohler
Type	Generator / Diesel / 4 cylinder (in-line) / Sound cover
Power	27 kW
Engine hours	3110 h (State 04.05.2023)
Cooling	Dual circuit cooling

// Generator 2

Manufacture	Kohler
Type	Generator / Diesel / 4 cylinder (in-line) / Sound cover
Power	27 kW
Engine hours	3220 h (State 04.05.2023)
Cooling	Dual circuit cooling

Tanks

Fuel tank	8,500 l
Water tank	1,600 l
Waste tank	600 l
Grey tank	300 l



Exterior

Exterior Designer	Elegance Yachts
Flybridge	Seating group, Table, Sun pads, Flybridge single cover
Teakdeck	Foreship, Gangboard, Stairs to the bathing platform, Bathing platform, Aft deck, Fly Bridge
Reeling	Sea railing, Bulwark, Wooden handrail
Anchor winches	Bow (2x el. control)
Anchor 1	100 m Chain
Anchor 2	100 m Chain
Winches	2x Aft deck
Window	Windshield wiper (3x), Windshield washer system, Front window blower (Air condition)
Radar arch	GRP
Crane	Hydromar, 600 kg Lifting power
Gangway	Hydromar, 4.60 m., mit Schwenk
Bathing ladder	hydraulic
Other	Stainless steel plug-in railing around the bathing platform (5-piece) stainless steel railing around the flyroof (10 pieces) High quality solid bathing ladder

Interior

Interior Designer	Drettmann Yachts
Number of cabins	4 (without crew)
Berths	up to 8

Bathrooms	4x
Dinette	Table & Chairs
Deck salon	✓
Indoor helm station	✓
Bridge	✓
Kitchen-Equipment	Hob (Ceran field), Microwave, Oven, Extractor hood, Sink (Double sink), Dishwasher, Refrigerator, Freezer, Ice Maker, Washing machine (with Dryer)
Other	In each case on Stbd. + Bb. Side a lateral door to the respective gangboard, Saloon seating area in leather, seating area with table at the inside driving position in leather, floors of bathrooms and kitchen in marble with Niro strips (4x), vacuum cleaner system, div. dimmers, 5 areas with underfloor heating, towel heaters in the bathrooms (4x)

Crew

Crew area	Aft ship, sep. Eingang
Cabins	2
Berths	3
Bathrooms	2

Nautical

Echo sounder	Raymarine with daughter
Sumlog	Raymarine with daughter



Compass	Raymarine with daughter
Autopilot	Raymarine , 2nd control
Chartplotter	Raymarine , 2nd unit, Screen integrated in radar
GPS	Raymarine, , integrated in plotter/radar
AIS	✓
VHF radio	2x Raymarine, GMDSS
Radar	Raymarine
Wind measuring system	✓
Rudder angle indicator	2x

Electrical equipment

Power supply	Shore connection (2x), Cable master (1x), Electrical system 24 V, Chargers (Mastervolt), Converter (from 24 V to 230 V), Alternators (2x), Battery, Battery main switch
Lighting	Deck lighting, Navigation lights
Spotlights	Search spotlight (electric, 2x)
TV / Audio	SAT antenna (Trac Vision G 6), TV (6x)

Water / Climate / Heating

Water system	Pressurized water system (electric), Seawater treatment (1 Liters/h), Warmwassersystem
Air conditioning system	Type: heating/cooling
Floor heating	unter Böden

Other	Air conditioner "Chilwater", additional waterworks 220 V, el. retractable TV cabinet in the salon, stereo system in the salon "Bose 48", camera surveillance system (1 monitor, 2x rotating / zoom cameras, color)
--------------	--

Safety

Anchor ball	✓
EPIRB transmitter	✓
Signal horn	✓
Fire extinguisher	5x
Lifebelt	✓
Life rafts	2x max. 8 Pers.
Extinguishing system engine room	✓
Fire alarm system	✓
Vessel monitoring	✓
Camera system	✓
Bilgepumpe	5x
Other	"Burl" horn



Refit

Work in 2022 & 2023:

- New chart plotter Raymarine 3x
- New radar Raymarine
- New autopilot Raymarine
- Special construction of a swim ladder with platform
- Renewal of MTU displays
- Renewal of the TV's in the salon
- Thruster controller on fly bridge renewed
- New anti-fouling
- All bingen painted
- renewal of the teak on the gangway







T/Tespresso

AVON



Elegance







SANLORENZO

Flanigan























Panel of electronic displays including a Raymarine fire alarm control panel with a red "FIRE" indicator and a keypad.

Central Raymarine electronic display panel featuring four large black screens and a row of analog gauges above them.

Right-side electronic panel containing a video monitor, a Raymarine control unit, and other electronic components.

Helm console panel with various controls, including a throttle lever, engine start button, and multiple analog gauges.



Lower dashboard area featuring an intercom system, a speaker, a VHF radio, and a telephone handset.







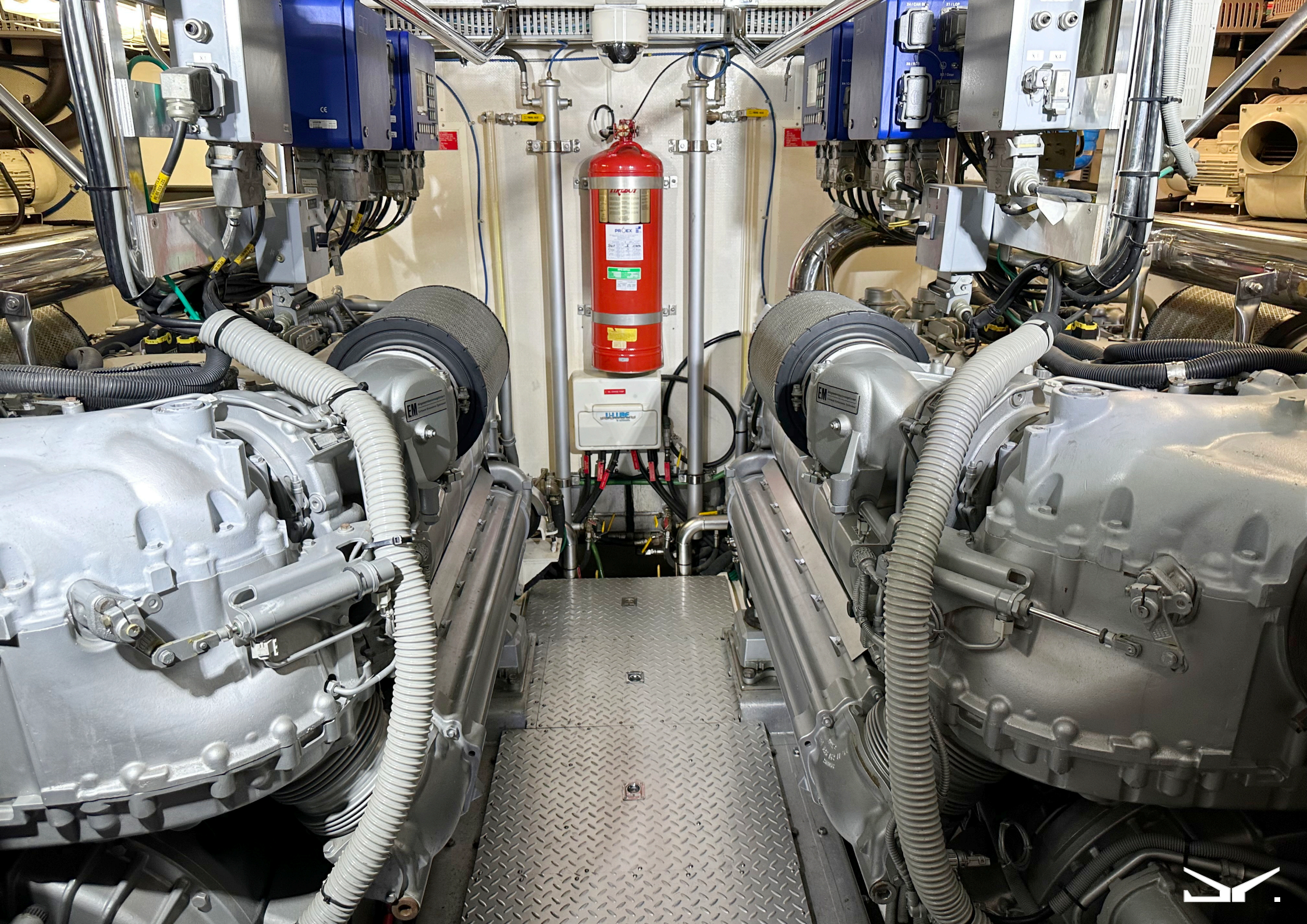


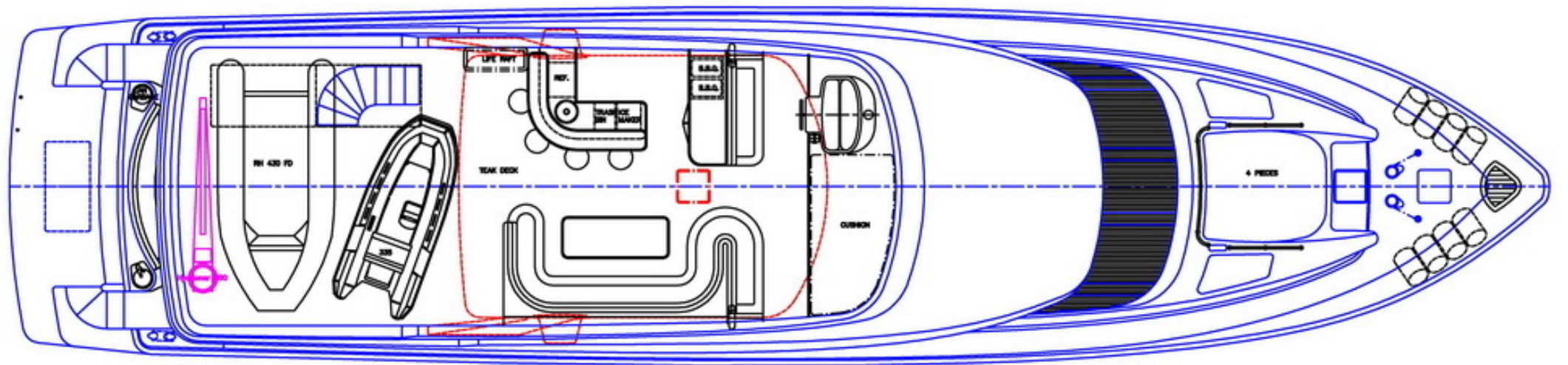
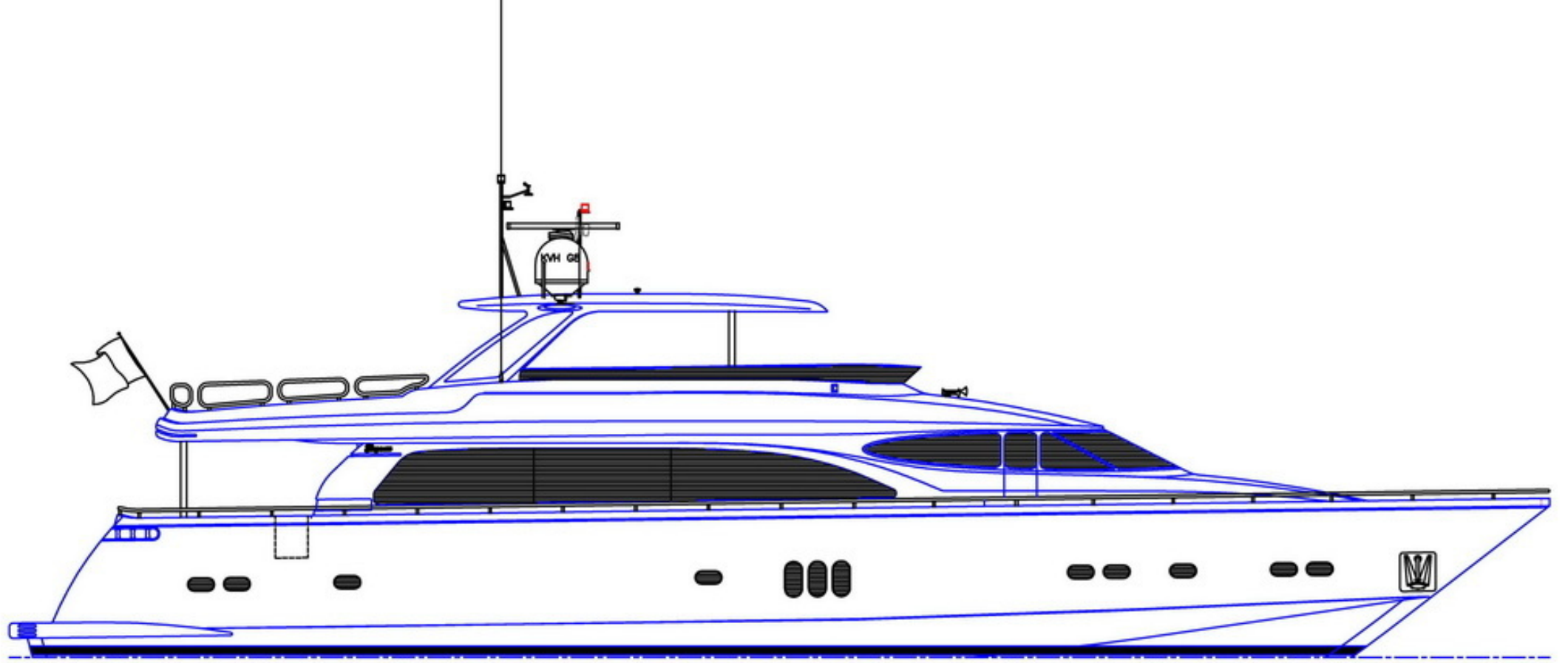




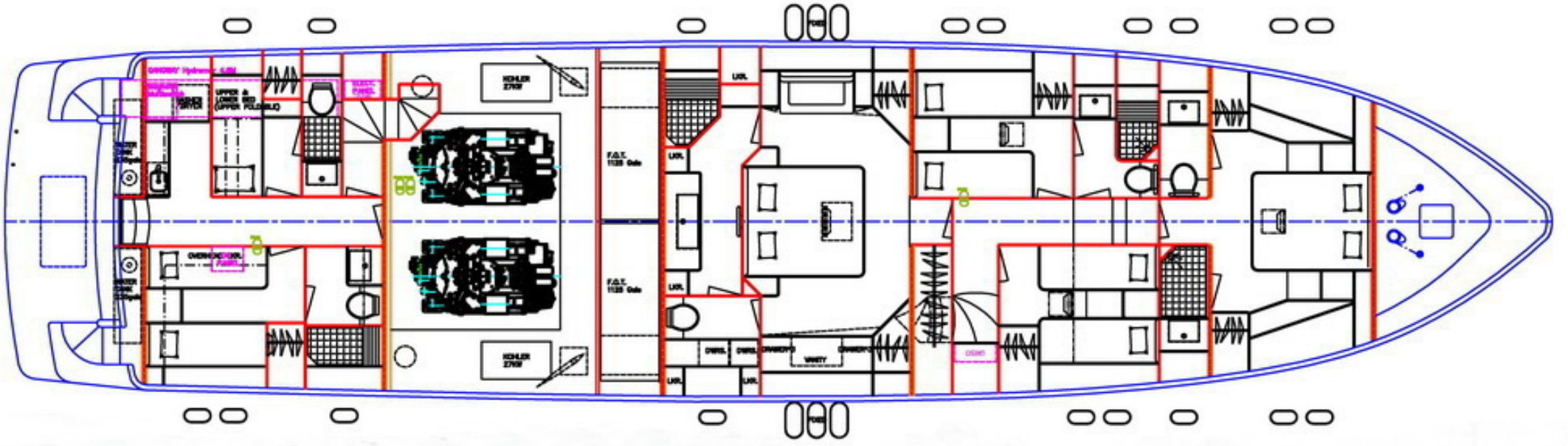
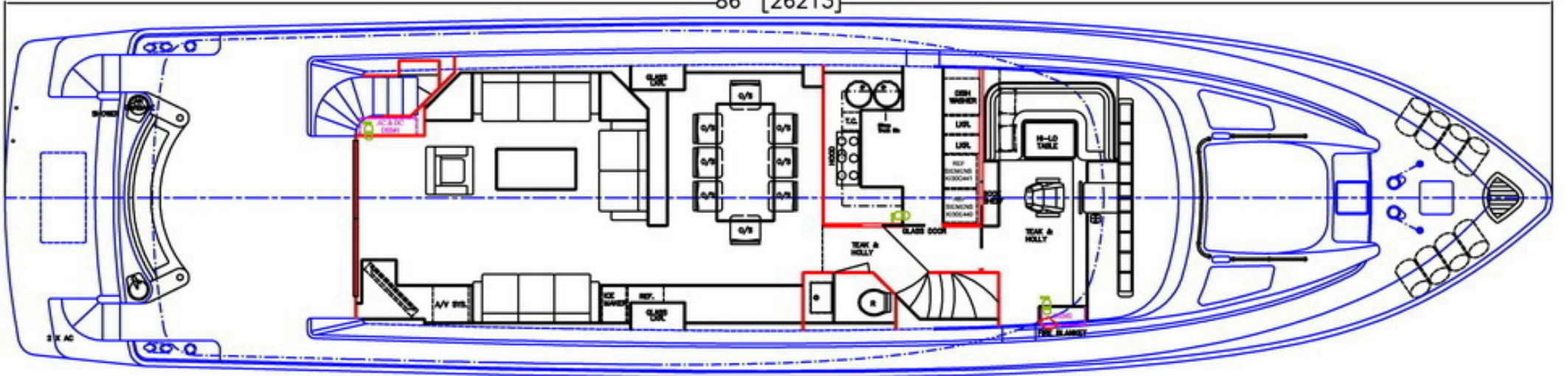








86' [26213]





DRETTMANN YACHTS

BREMEN · GERMANY · SINCE 1970

drettmann.com